



BURNSIDE

BurnsideDisplay.com

2024 CATALOG

BURNSIDE IN BLACK new



NECTAR, CANNABIS RETAILER, PORTLAND, OREGON

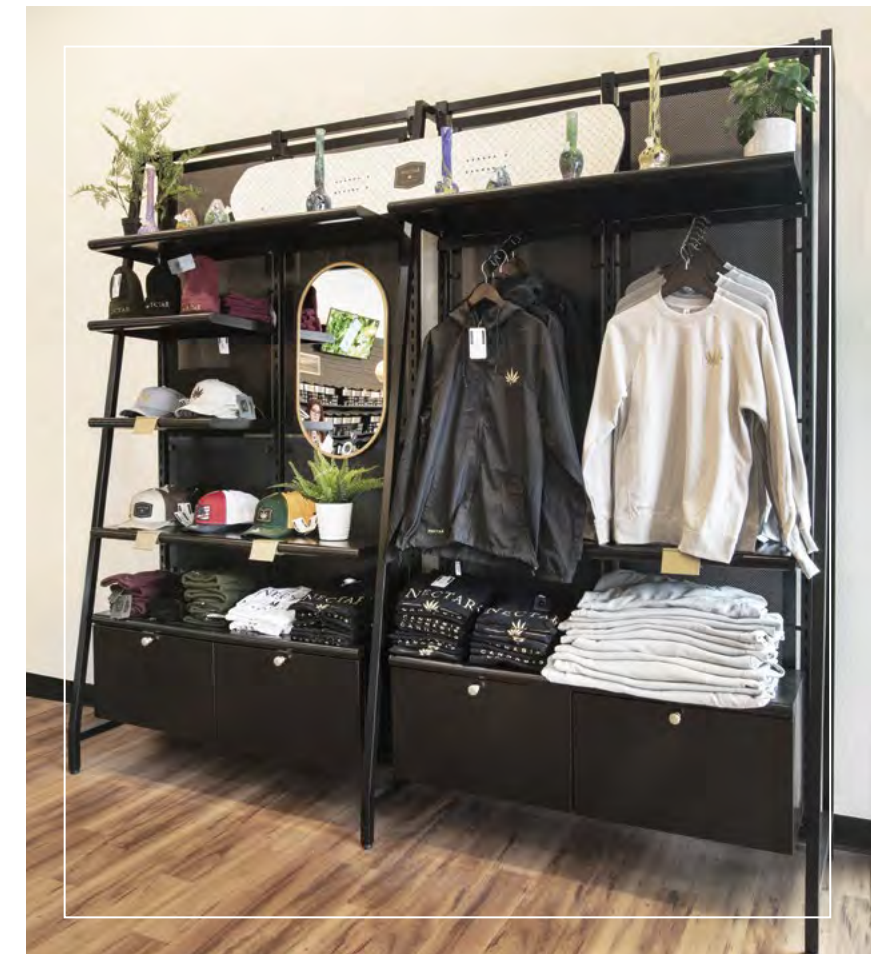
Fixtures: Burnside in Black Combined with Other Displays

Color Palette: Black and Gold

BURNSIDE IN-STORE

GET YOUR STORE UP AND RUNNING IN NO TIME

Nectar, an Oregon cannabis retailer, was quickly expanding and needed to get their stores up and running in no time. Burnside answered the challenge with nesting tables, wall systems, gondolas, and more. Displays were custom powder coated for a modern touch that perfectly matched Nectar's black and gold brand colors!



BURNSIDE IN BLACK

new

BURNSIDE IN-STORE

A CUSTOM LOOK WITHOUT STARTING FROM SCRATCH

Cotopaxi achieved the perfect balance of style and utility with their Portland store design. Our Burnside fixture line provided an ideal base, while custom-built wood shelves added a charming touch that really made this space stand out! The black finish gave it just enough edge to take it from classic outdoor gear shop to hip urban boutique.



COTOPAXI, PORTLAND, OREGON

Fixtures: Black Burnside with Custom Wood Shelves

Color Palette: Black and natural wood

BURNSIDE IN BLACK

new

BURNSIDE IN-STORE

A HIGH ALPINE EXPERIENCE

From its spectacular 11,249-foot perch atop Mt. Hood in the Pacific Northwest, Timberline Lodge offers an unparalleled high-alpine experience! G+B recently joined forces with them to spruce up their Wy'east gift shop – outfitting it with Burnside fixtures in black, decked out in graphics depicting the area's awe-inspiring ruggedness and beauty.



TIMBERLINE LODGE, MT. HOOD, OREGON

Fixtures: Powder Coated Burnside with Custom Fixtures & Accessories

Color Palette: Charcoal Black and Monticello Maple

BURNSIDE ORIGINAL



PAPERMAKER PRIDE, CAMAS, WA
Fixtures: Stock Burnside and Rustic Furniture
Color Palette: Silver and Rustic Wood

BURNSIDE IN-STORE

AN INDUSTRIAL TAKE ON CASUAL TEAM APPAREL

Papermaker Pride wanted an industrial take on casual team apparel. They brought together rustic wood fixtures to offset the modern Burnside line and created a unique look that pays tribute to their city's iconic "Camas Pride". It all tied together with signage featuring historical photos that made a strong statement in the store.



BURNSIDE ORIGINAL

BURNSIDE IN-STORE

BRINGING THE “OUTSIDE-IN” FUSED WITH BURNSIDE

Purpose-Built, an apparel provider for American tradespeople recently teamed up with Grand + Benedicts to transform their retail spaces. With cost-effectiveness and an “outside-in” aesthetic in mind, Purpose-Built used off the shelf Burnside store fixtures wherever possible while adding unique features that drew inspiration from real world job sites!



PURPOSE BUILT, LIVERMORE, CALIFORNIA

Fixtures: Stock Burnside with Custom Fixtures and Found Objects

WELCOME TO

BURNSIDE

The Burnside collection combines innovation and utility with interchangeable accessories, all equally adaptable to the wall system and freestanding displays. Merging precision craftsmanship with the strength of steel delivers the flexibility required in retail.



Burnside W-Frame featured in a black finish.

FREESTANDING WALL SYSTEMS

BURNSIDE W-FRAME - SINGLE-SIDED

Single-Sided Wall System | Metallic Silver and Black finish | Units are 53¾" wide and uprights are 24" on center | 95" Tall X 22" Deep | Levelers included | Use with 292-FSW-PNL-P-K Back Panels only

A 292-WF-STR	Silver	Starter unit
A 299-WF-STR	Black	Starter unit
B 292-WF-ADD	Silver	Add-on unit
B 299-WF-ADD	Black	Add-on unit

new

BURNSIDE D-FRAME - DOUBLE-SIDED

Double-Sided Wall System | Metallic Silver and Black finish | Units are 53¾" wide and uprights are 24" on center 95" Tall X 32" Deep | Levelers included | Use with 292-FSW-PNL-P-K Back Panels only

C 292-DF-STR	Silver	Starter unit
C 299-DF-STR	Black	Starter unit
D 292-DF-ADD	Silver	Add-on unit
D 299-DF-ADD	Black	Add-on unit

new

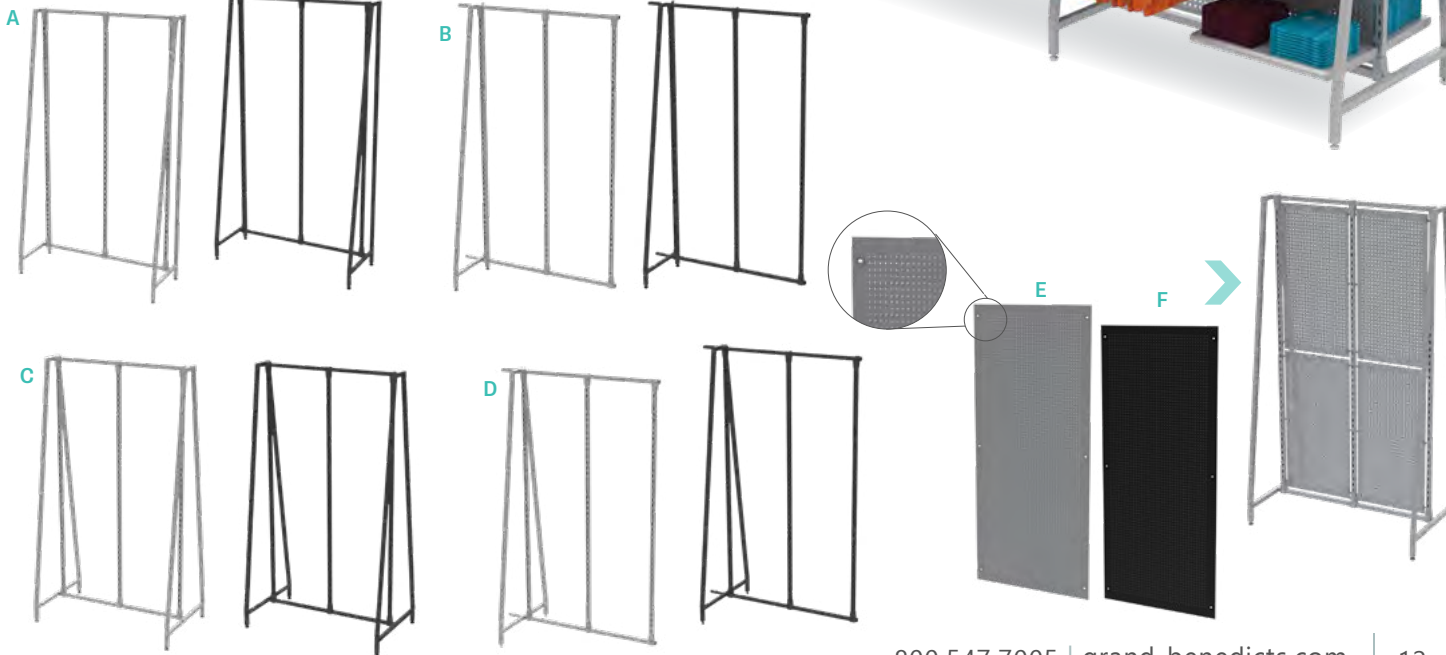
BURNSIDE FREESTANDING WALL BACK PANELS

Use with Burnside W-Frame and D-Frame Wall Systems (only) | Metallic Silver or Matte Black finish | Available in perforated metal | 21½" Wide X 42¾" Tall

E 292-FSW-PNL-P-K	Silver
F 299-FSW-PNL-P-K	Black



FREESTANDING WALL SYSTEMS
THAT CAN GO ANYWHERE,
WITHOUT DRILLING HOLES!



WALL UPRIGHTS TO MAXIMIZE SPACE

BURNSIDE WALL UPRIGHT

102"H X 1.25" square upright with 3" projection | Metallic Silver or Matte Black finish | Wall mounting hardware and levelers included | Mount uprights 24" or 48" on center

- A | 292-W-UPRIGHT Silver
- A | 299-W-UPRIGHT Black

BURNSIDE UPRIGHT EXTENSION

Use 18" extension with Wall Upright to extend it to 120" tall to add space or display graphic frames

- B | 292-W-UEXT-18 Silver
- B | 299-W-UEXT-18 Black

Use with back panels page 14



NEW BURNSIDE SHOWCASE

Secure valuable merchandise while giving them a stunning presentation in store!

BURNSIDE SHOWCASE

Clear, tempered glass with Metallic Silver finish frame | Levelers included | Lockable back glass door with two keys | LED light rail with frosted diffuser, and two interior glass shelves
Ships assembled

292-SC-48 48" W x 20" D x 38" T



Front-facing



Back-facing with Locking Doors

START WITH THE CORE DISPLAYS - 2-WAYS & 3-WAYS

BURNSIDE 2-WAY AND 3-WAY RACKS

Metallic Silver finish | Four 5" steel/rubber casters (2 locking) | Use with optional Perforated Metal or Frosted Acrylic Back Panels (sold separately) | 2-Way measures 25.75"W X 57.15"H X 25.25"D | 3-Way measures 25.75"W X 57.15"H X 26.75"D

- A | 292-2WAY 2-Way Frame
- B | 292-3WAY 3-Way Frame
- C | 292-PNL-A-F-K Frosted Acrylic Back Panel
- D | 292-PNL-P-S-K Silver Perforated Metal Back Panel



CUSTOM



Choose from our perforated metal back panels in silver or black, or frosted acrylic for a softer feel.



FROSTED ACRYLIC



SILVER PERF.

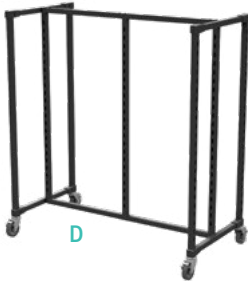


GONDOLAS > OUR MOST POPULAR BURNSIDE FIXTURES

BURNSIDE GONDOLA MERCHANDISER

Metallic Silver or Matte Black finish | Four 5" steel/rubber casters (2 locking) | Use with optional Perforated Metal or Frosted Acrylic Back Panels | Small 27.75"W X 25.75"D X 57.15"H, Large 51.75"W X 25.75"D X 57.15"H

- A | 292-GOND24 Small Silver Gondola Frame
- B | 299-GOND24 Small Black Gondola Frame
- C | 292-GOND48 Large Silver Gondola Frame
- D | 299-GOND48 Large Black Gondola Frame
- E | 292-PNL-A-F-K Frosted Acrylic Back Panel
- F | 299-PNL-P-S-K Perforated Black Metal Back Panel
- G | 292-PNL-P-S-K Perforated Silver Metal Back Panel





BURNSIDE 4-WAY RACK

32"W X 54"H | Metallic Silver finish | Four 5" steel/rubber casters (2 locking) | Sign Header in picture is sold separately | Turn the 4-Way into a 2-Tier rack with Twist-on Arms

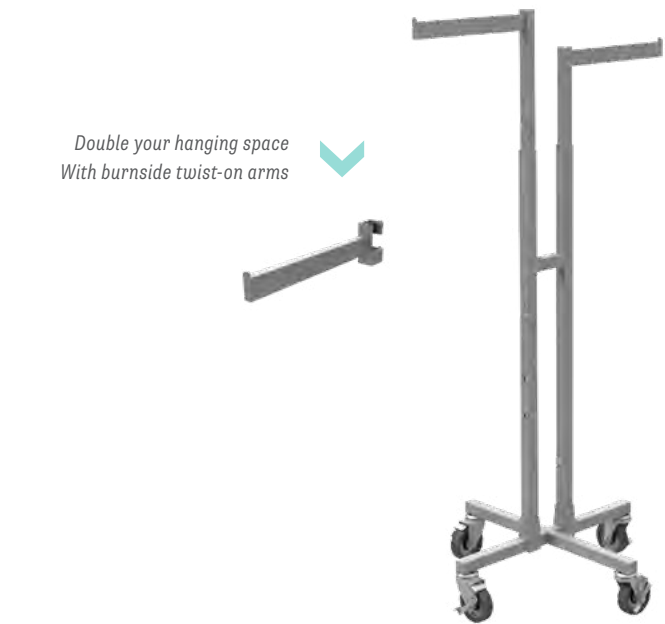
- 292-4WAY
- 292-ARM-BLADE
- 4-Way Rack
- Twist-on Arm



BURNSIDE T-STAND

25.25"W X 56.875"H | Metallic Silver finish | Two 12" long adjustable height arms | Four 5" steel/rubber casters (2 locking) | Add hanging space with Twist-on Arms

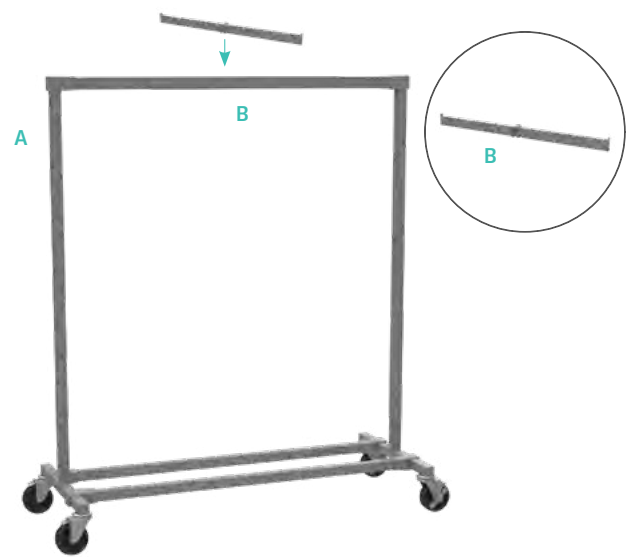
- 292-T-STAND
- 292-ARM-BLADE
- T-Stand
- Twist-on Arm



BURNSIDE BALLET BAR

57.15"H X 48"W X 20"D | Four 5" steel/rubber locking casters (2 locking caster) 1.25" square tubing in Metallic Silver finish | Add hanging space with optional Double Faceout: 29"W X 1.75"H X 7/16"D (sold separately)

- A | 292-BB-48
- B | 292-DBL-FO
- Ballet Bar
- Double Faceout



BURNSIDE ROUND RACK

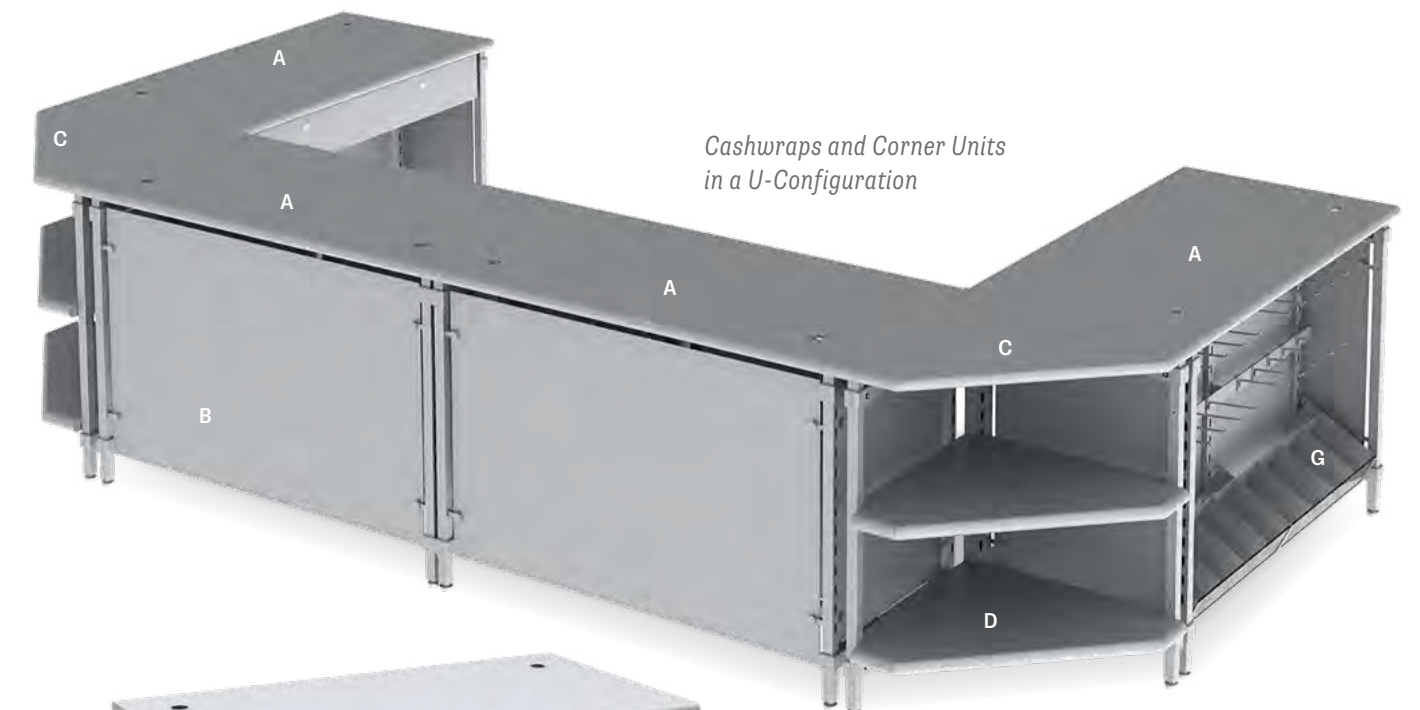
42" diameter round rack in a Metallic Silver finish | Four 5" steel/rubber locking casters | Choose between no top shelf, a 36" diameter metal shelf or a 3/16" tempered glass | Overall height is 51 1/2"

- C | 292-ROUND-M-K
- D | 292-ROUND-G-K
- E | 292-ROUND
- With Metal Top Shelf
- With Glass Top Shelf
- No Top Shelf



BURNSIDE CASHWRAP DESIGNED FOR BOTH STYLE & FLEXIBILITY

Whether you are going for a clean and stylish look or seeking more merchandising space, we have the Burnside Cashwrap you’ve been waiting for. To maximize flexibility, all components are sold a’ la carte to fit your needs.



Cashwraps and Corner Units
in a U-Configuration



Cashier Side



Customer View

BURNSIDE CASHWRAP
COMPONENTS

- A Cashwrap
- B Cashwrap Front Panel
- C Corner Unit
- D Corner Unit Shelf
- E Corner Unit Front Panel
- F Register Drawer
- G Display Bin
- H 24" Shelf
- I Caster



Corner Unit with
front panel

SOLD A' LA CARTE FOR YOUR CONVENIENCE

BURNSIDE CASHWRAP

Metallic Silver or Matte Black finish with extra durable coating | Use stand-alone, side-by-side or as an L- or U-configuration with the corner unit | Use with optional front panel for a clean look or accessorize with bins, and hooks | Additional accessories include Register Drawer, Casters and Merchandising shelves | Countertop includes two holes for cords | 52¼"W x 28"D x 35½"T | Assembly required

- A | 292-CW-K Silver
- B | 299-CW-K Black



BURNSIDE CASHWRAP FRONT PANEL

Metallic Silver or Matte Black finish | Can be substituted with a custom graphic | No tool assembly

- C | 292-CW-FP Silver
- D | 299-CW-FP Black



BURNSIDE CASHWRAP CORNER UNIT

Use to connect two cashwraps to create an L- or U-shape configuration | Use with optional front panel and casters | 28"D x 35½"T | Metallic Silver or Matte Black finish

- E | 292-CW-CU-K Silver
- F | 299-CW-CU-K Black



BURNSIDE CASHWRAP CORNER UNIT SHELF

Shelves to use with the Burnside Cashwrap Corner Unit | Adjustable shelf with hardware (pins) included | Metallic Silver or Matte Black finish

- G | 292-CW-CU-S Silver
- H | 299-CW-CU-S Black



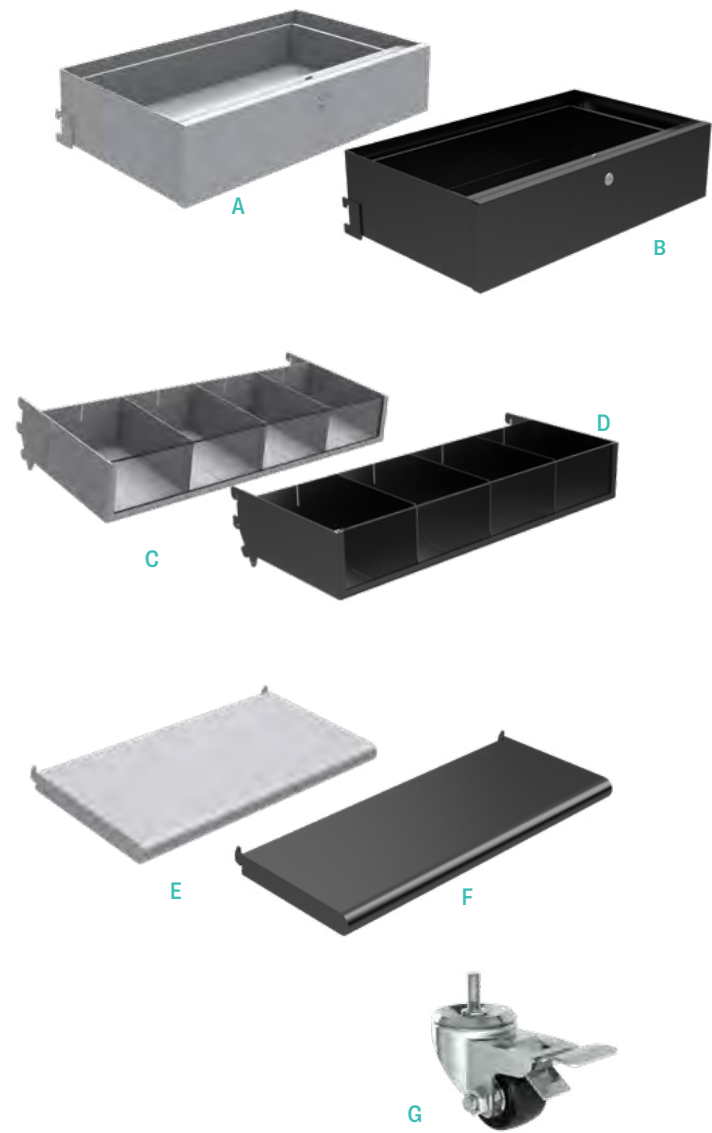
BURNSIDE CASHWRAP CORNER UNIT
FRONT PANEL

Use with Burnside Cashwrap Corner Unit | Mounting hardware included | Metallic Silver finish

- I | 292-CW-CU-FP Silver
- J | 299-CW-CU-FP Black



BURNSIDE CASHWRAP ACCESSORIES



BURNSIDE CASHWRAP REGISTER DRAWER

Use with the Burnside Cashwrap | Metallic Silver or Matte Black finish
Attaches without tools | 24" wide x 6" tall x 14" deep

- A | 292-CW-RD Silver
- B | 299-CW-RD Black



BURNSIDE CASHWRAP DISPLAY BIN

Use for merchandising on the Burnside Cashwrap | Metallic Silver or Matte Black finish | Attaches without tools | 24" wide x 8" deep x 4" tall | Includes two bin dividers

- C | 292-SLF-BIN4-S Silver
- D | 299-SLF-BIN4-S Black



BURNSIDE 24" CASHWRAP SHELF

Use for merchandising, storage or as an ADA writing ledge mounted to the side of the Cashwrap | Metallic Silver or Matte Black Finish | 9¾" deep X 24" wide

- E | 292-CW-ADA-S Silver
- F | 299-CW-ADA-S Black



2" BURNSIDE CASHWRAP CASTER WITH BRAKE

Screws into the bottom of each leg | 2" rubber caster with brake
Sold individually | Chrome finish

- G | 292-CW-CASTER-2 Chrome

ADDITIONAL ACCESSORIES TO COMPLEMENT YOUR CASHWRAP



Burnside Peg and Flip Scan Hooks, see page 20

Burnside 1½" Projection Hangbars for displaying hooks, see page 23

Burnside 48" Bullnose Shelf, see page 21
Only fits cashier side.

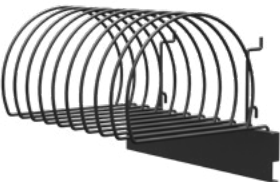
BURNSIDE ACCESSORIES FOR A FINISHING TOUCH

BURNSIDE BEANIE DISPLAY

MULTI USE

Display up to 10 beanies | Arms swing side-to-side | Available in Metallic Silver and Black finish | Hoops project 9.4", are 5.9" tall and made of a 0.177" thick wire Mount to Burnside hangbar | Quick and no-tool assembly

- 289-BCR-MF-S Silver
- 289-BCR-MF-B Black



Mount to Burnside hangbar (sold separately) as shown here.



BURNSIDE T-SHIRT DISPLAY BOX

MULTI USE

Metallic Silver and Black finish | 11¾" High x 11¾" Wide x 1½" Deep | Use on the Burnside hangbar (sold separately), or use with included adapters to hang on slatwall, gridwall, slatgrid or mount directly to a wall.

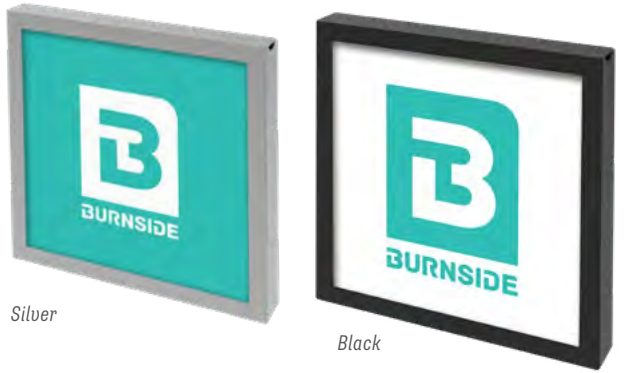
- 292-TSD-S Silver T-shirt Box
- 292-TSD-B Black T-shirt Box



Silver T-Shirt Box

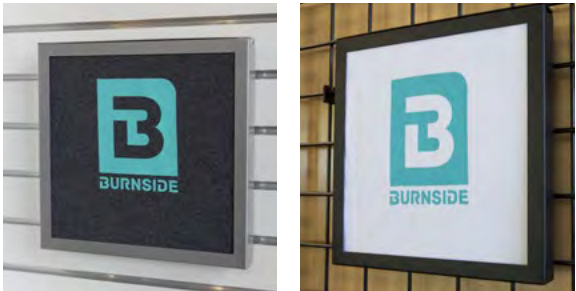


Use with included adapters to hang on slatwall, gridwall, slatgrid or mount directly to wall.



Silver

Black



BURNSIDE PEG HOOKS

¼" diameter wire in Metallic Silver or Matte Black finish | Available in 6" and 10" projections | Attach to Burnside Jetrail see page 23

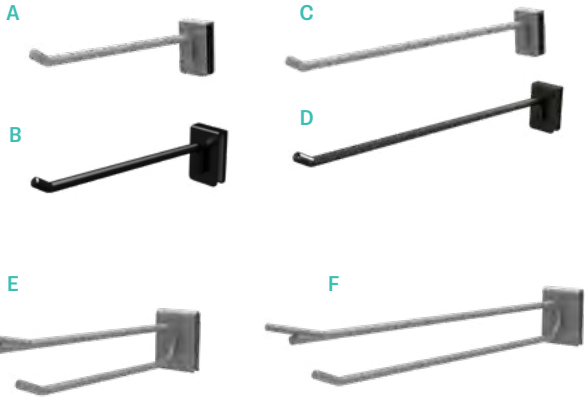
- A | 292-PEG-6 Silver 6" Projection
- B | 299-PEG-6 Black 6" Projection
- C | 292-PEG-10 Silver 10" Projection
- D | 299-PEG-10 Black 10" Projection



BURNSIDE FLIP SCAN HOOKS

0.25" diameter wire in a Metallic Silver finish | Available in 6" & 10" projections Attach to the Burnside Jetrail see page 23 | Can be used with Flip Scan Label Holders

- E | 292-FLIPSCAN6 6" Projection
- F | 292-FLIPSCAN10 10" Projection



PERSONALIZE YOUR SPACE WITH WOOD SHELVES

New shelf options available for more merchandising flexibility and style. From heavy duty book shelves to more elegant ways to elevate Burnside.

BURNSIDE BULLNOSE SHELVES

14"D X 1.5" H | Metallic Silver or Matte Black finish
Use with shelf talker sign holder below

A 292-SHELF24	Silver	24" Wide
A 299-SHELF24	Black	24" Wide
B 292-SHELF48	Silver	48" Wide
B 299-SHELF48	Black	48" Wide

BURNSIDE BOOK SHELVES

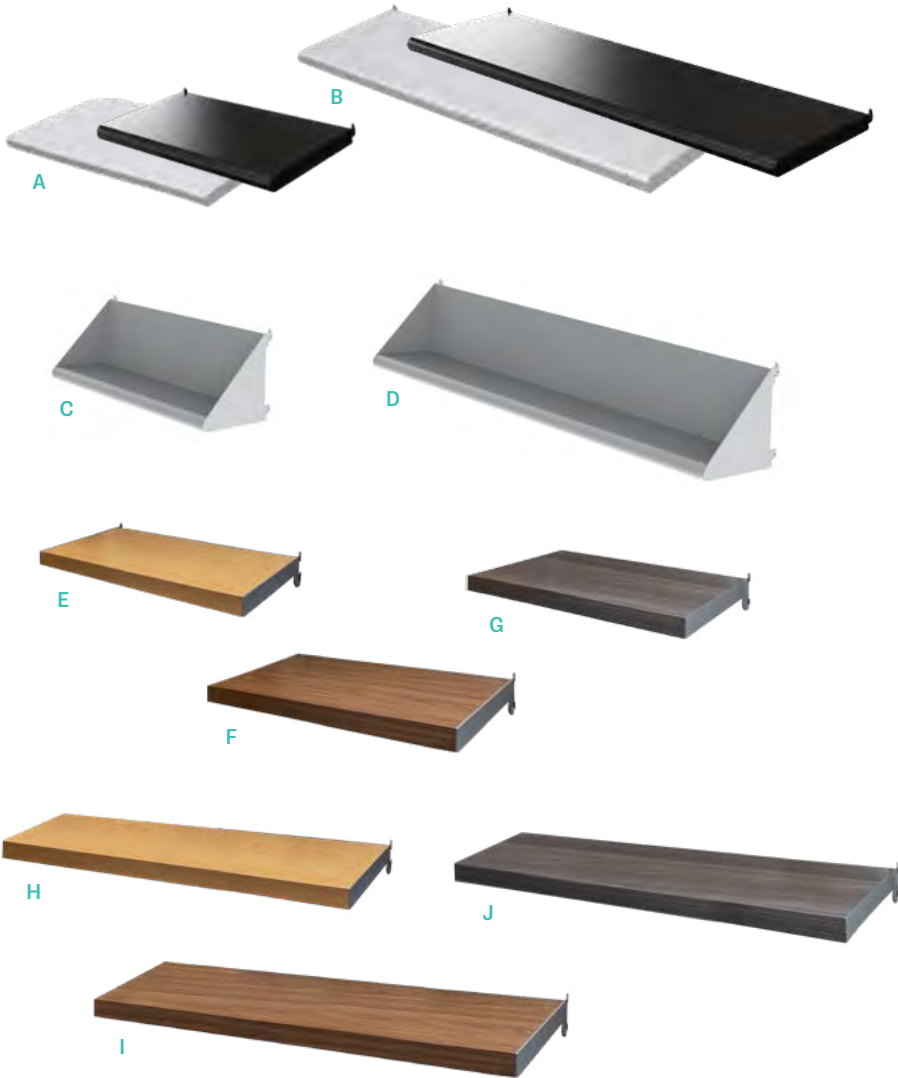
9.3" tall shelf tilted slightly upward (80 degrees) to support books | Metallic Silver finish

C 289-R-BR8-EP	24" Wide
D 289-R-BR8	48" Wide

BURNSIDE WOOD SHELVES

14" deep wood shelves | Metallic Silver finish frames with 3/4" laminate inserts

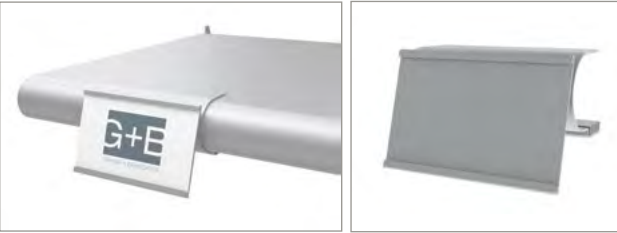
E 292-SHELF24MI-K	Maple Shelf	24" Wide
F 292-SHELF24WI-K	Walnut Shelf	24" Wide
G 292-SHELF24GI-K	Pewter Shelf	24" Wide
H 292-SHELF48MI-K	Maple Shelf	48" Wide
I 292-SHELF48WI-K	Walnut Shelf	48" Wide
J 292-SHELF48GI-K	Pewter Shelf	48" Wide



SHELF TALKER FOR BULLNOSE SHELF

Attaches to Burnside Bullnose shelf using a built-in magnet
Designed to be used with a 4" wide x 2 1/2" tall sign
Sign channel is .029"

292-SH-ST-2X4 4"W x 2-1/2"H



Attaches to Bullnose Shelf with built-in magnet.

GET A BIG LOOK FOR A SMALL PRICE



FACEOUTS, DRAWER & BACK PANELS

BURNSIDE FACEOUT

1.5" Wide X 0.194" thick faceout | Attaches to Burnside 1.5" jetrail

A 292-FACEOUT-11	Silver
A 299-FACEOUT-11	Black

new

BURNSIDE WATERFALL

1.5" Wide X 0.194" thick waterfall with six knobs
Metallic Silver finish | Attaches to Burnside 1.5" jetrail

B 292-WATERFALL	11" Projection
-------------------	----------------

BURNSIDE DRAWER

Ideal for storing overstock merchandise
13.87"H X 13.25"D X 24"W Includes lock and key

C 292-DRAWER	Silver
C 299-DRAWER	Black

new

BURNSIDE BACK PANELS

47.75"H X 20"W Perforated Metal or Frosted Acrylic Back Panels | Fits Burnside Wall Upright, 2-Way, 3-Way, Gondolas and Gondola Wall Tower
Mounting hardware included

D 292-PNL-P-S-K	Silver Perforated Metal
E 299-PNL-P-S-K	Black Perforated Metal
F 292-PNL-A-F-K	Frosted Acrylic

Choose from our perforated metal back panels in silver or black or for a softer feel, choose frosted acrylic.





ELEVATE YOUR DISPLAY: HANGBARS FOR APPAREL & ACCESSORIES

BURNSIDE HANG RAILS

1.5" High X 0.210" thick | Metallic Silver or Matte Black finish

A | 24" U-RAIL/SIDE HANG WITH 12" PROJECTION

292-HB24-12 Silver
299-HB24-12 Black

B | 24" HANGBAR WITH 1½" PROJECTION

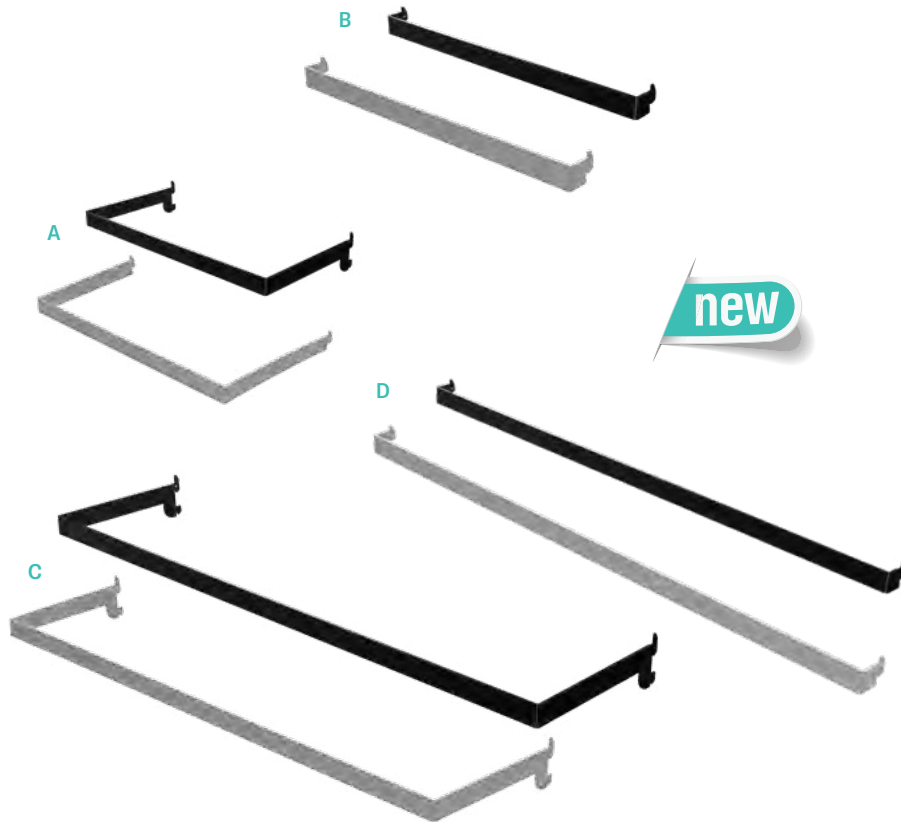
292-HB24-1-5 Silver
299-HB24-1-5 Black

C | 48" U-RAIL/SIDE HANG WITH 12" PROJECTION

292-HB48-12 Silver
299-HB48-12 Black

D | 48" HANGBAR WITH 1½" PROJECTION

292-HB48-1-5 Silver
299-HB48-1-5 Black



MIRROR, FOOTWEAR SHELVES & MERCHANDISING BINS

BURNSIDE SADDLE MOUNT SINGLE SHOE SHELF

11"W X 4"D | Attaches to the Burnside hangbars

A | 292-SHLF-SHOE-S 11"W X 4"D

BURNSIDE ADJUSTABLE PERFORATED SHELF

24"W X 13"D with 0.7" tall lip | Metallic Silver finish | Display flat or slanted

B | 292-SHLF-SHOE-A 24"W X 13"D

BURNSIDE MERCHANDISING BIN

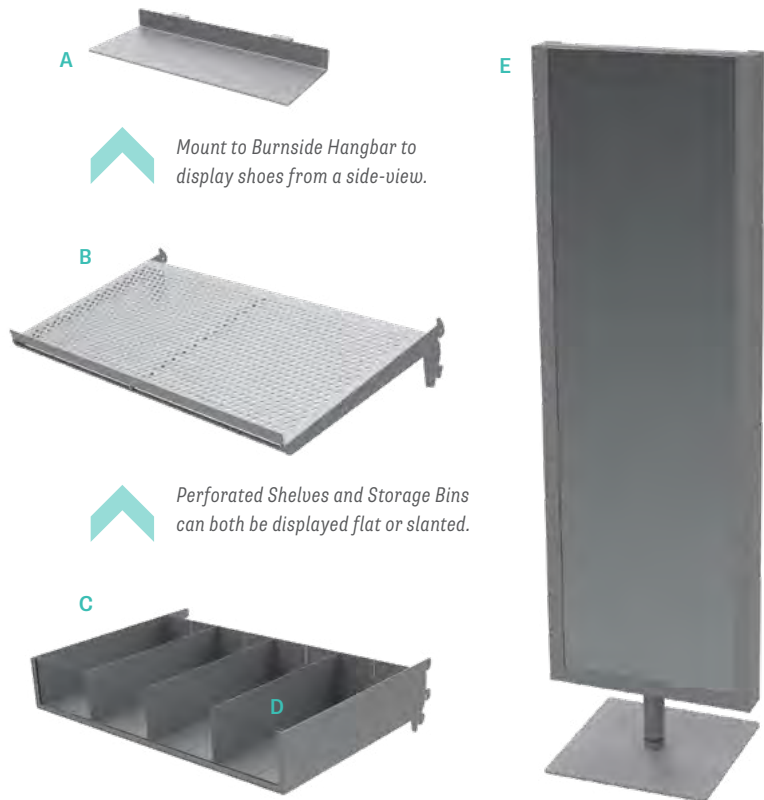
Includes three adjustable dividers and acrylic fronts | Display flat or slanted | Metallic Silver finish | 24"W X 14"D X 4"H

C | 292-SHELF-BIN4 Merchandising Bin
D | 292-DIVIDER-SB Additional Dividers

BURNSIDE FREESTANDING SWIVEL MIRROR

Metallic Silver finish | 66" overall height | Base is 16" X 16"

E | 292-MIRROR-K 18" X 60"





ADD GRAPHICS TO MAKE IT YOURS

BURNSIDE SIGN HEADER WITH BRACKETS

Top-loading sign header in Metallic Silver finish | 1/8" top opening | Fits 23 3/8"W X 8"H sign insert | Visible Area is 23"W X 7.5"T

F | 292-SIGN-24X8

BURNSIDE SIGN HEADER

Top-loading sign header in Metallic Silver or Matte Black finish | 3/8" top opening | Use with Burnside Gondolas, 2-Ways, 3-Ways and 4-Ways | Fits 24"W X 5 1/4"H sign inserts | Visible area is 23 1/4" W X 4 1/4"H

G | 292-SIGN-24X5 Silver
G | 299-SIGN-24X5 Black

BURNSIDE TABLE TOP SIGN HOLDERS

Top-loading sign holders in Metallic Silver finish | 1/8" top opening

H | 292-SIGN-TT-7X5 7"W X 5 1/2"H
Visible area is 6 1/4" W X 4 3/4" T

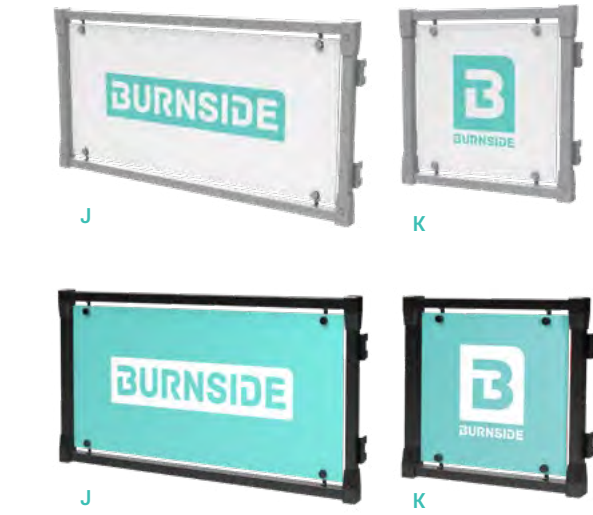
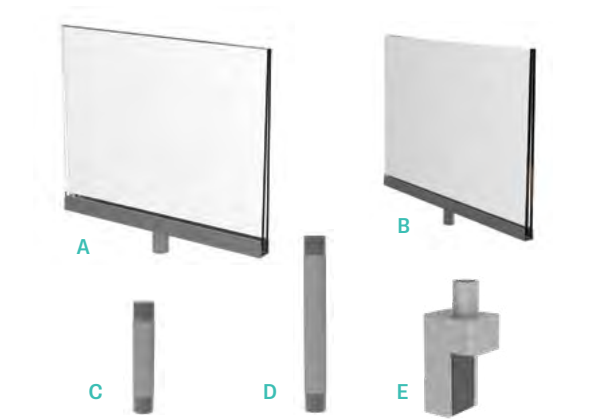
I | 292-SIGN-TT-11X7 11"W X 7"H
Visible area is 10 1/4" W X 6 1/4" T

Visit our Website for Ready-To-Use Graphic Templates

BURNSIDE SIGN HOLDERS WITH STEMS

Top-loading sign holders in Metallic Silver finish | Choose between two sizes and use with a 2" or 3" stem | Use magnetic clamp (sold separately) to use on Burnside Round Rack, 4-Way Rack and more

A | 292-SIGN-11X7 11" W X 7"H Sign Holder
B | 292-SIGN-7X5 7"W X 5"H Sign Holder
C | 292-SIGN-S-2 2" Stem
D | 292-SIGN-S-3 3" Stem
E | 292-SIGN-SS Magnetic Clamp



LARGE BURNSIDE GRAPHIC FRAME FOR WALL SYSTEM

Use with Burnside Wall System | Fits 43.25"W X 19.5"H X 0.125" thick graphic | Graphic is quickly changed with no-tool thumb screws | See website for graphic template

J | 292-SIGN-GF 48"W x 24"H Silver
J | 299-SIGN-GF 48"W x 24"H Black

SMALL BURNSIDE GRAPHIC FRAME FOR WALL SYSTEM

Use with Burnside Wall System | Fits 19.25"W X 19.5"H X 0.125" thick graphic | Graphic is quickly changed with no-tool thumb screws | See website for graphic template

K | 292-SIGN-GF-24 24"W X 24"H Silver
K | 299-SIGN-GF-24 24"W X 24"H Black



BRIGHTEN YOUR BURNSIDE WALL SYSTEM

MAGNETIC LED LIGHT STRIPS

Magnetic LED Light Strips that attach under Burnside Shelves | Made of anodized aluminum | 1/2" wide | 5000 Kelvin with Clear Diffuser | Input Voltage DC24V | UL Certified | 15 1/2" long light cord to connect to power track and light cord cover included | Use with LED Light Power Supply (sold separately below)

A | 292-L-24-LED-K 24" Wide
A | 292-L-48-LED-K 48" Wide

LED LIGHT POWER SUPPLY

Includes a Power Track, an AC/DC Power Adapter and a Power Cord | Use with Burnside LED lights | The 70" long Power Track attaches to the back of wall uprights with magnet

B | 292-L-POWER-K



BRING MERCHANDISE TO LIFE WITH UNDER-SHELF LIGHTING

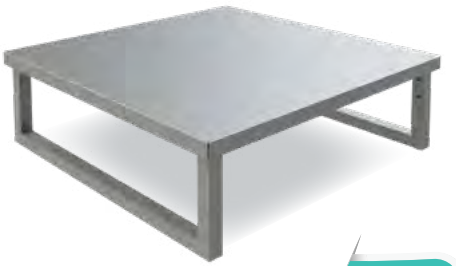
Attach LED lights under Burnside shelves and connect to Power Track, the Power Track attaches to the back of wall uprights with magnet (included). Cord cover included for a crisp, clean look.

NEW MANNEQUIN RISER

MANNEQUIN RISER

Easy assembly required | Metallic silver finish | Includes felt feet | Mannequin not included

292-MR NEW 24" X 24" X 8"



new



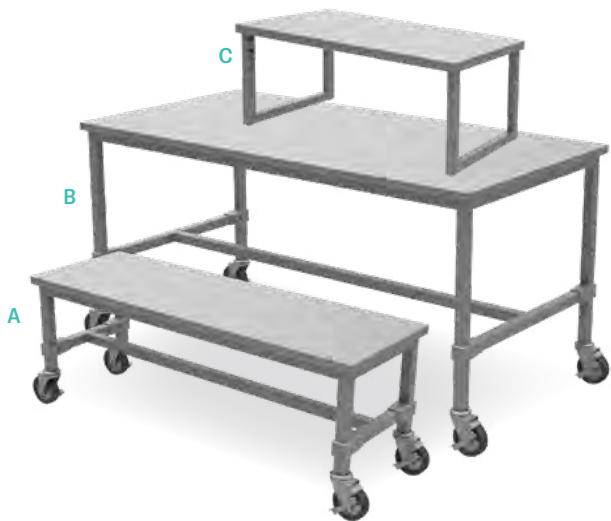
GIVE YOUR MANNEQUINS THE VIP TREATMENT THEY DESERVE WITH OUR NEW MANNEQUIN RISER.

STEEL HAS NEVER BEEN SO FLEXIBLE

BURNSIDE NESTING TABLES

Metallic Silver or Matte Black finish | Tables include four 5" steel/rubber casters (2 locking) | Use with table top sign holders

A 292-TABLE-SM	Small Silver Table	16"D X 48"W X 18"H
A 299-TABLE-SM	Small Black Table	16"D X 48"W X 18"H
B 292-TABLE-LG	Large Silver Table	30"D X 60"W X 30"H
B 299-TABLE-LG	Large Black Table	30"D X 60"W X 30"H
C 292-RISER	Silver Riser	14"D X 36"W X 12"H



SHOE TRY-ON BENCH WITH MIRRORS

Metallic Silver finish | Perforated metal seating | Acrylic side mirrors
24"L X 18"H X 14"D

289-SHOEBENCHKD Shoe Bench



SHOE & BOOK DISPLAY

REDESIGNED TO MATCH THE BURNSIDE FIXTURE LINE + FITS BURNSIDE ACCESSORIES



SHOE/BOOK RACK STARTER

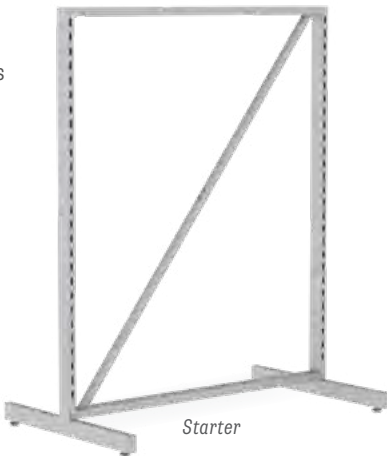
Build a freestanding shoe or book rack with this Starter Unit Includes 2 End Uprights, 2 Crossbars and a Z-Brace | Metallic Silver finish matches the Burnside fixture line | 49.18"W X 30"D X 60"H | Use with book shelves or perforated shoe shelves, sold separately | Levelers included

289-R-STR-60 Silver

SHOE/BOOK RACK ADD-ON

Double your space by connecting this Add-On Unit to a Starter Unit Includes a 1 Upright, 2 Crossbars and a Z-Brace | Metallic Silver finish matches the Burnside fixture line | 46.81"W X 30"D X 60"H

289-R-AO-60 Silver



BURNSIDE PERFORATED SHOE SHELVES

Perforated metal shelves great for merchandising shoes | Can also be used flat to display other merchandise | Available in 24" and 48" widths to fit the sides or end caps | Metallic Silver finish matches the Burnside fixture line Includes adjustable brackets to enable shelves to lie flat or slanted | Lip in front prevents merchandise from sliding off

289-R-SLF	Standard Shelf	48" X 13"
289-R-SLF-EP*	End Cap Shelf	24" X 13"

*End Cap (289-R-EP-60) on next page is required to mount this shelf to the shoe/book rack



BURNSIDE BOOK SHELVES

Heavy duty, durable shelves ideal for displaying books | Available in 24" and 48" widths to fit the sides or end caps | Shelf is 9.3" tall and tilted slightly upward (80 degrees) to support books | Metallic Silver finish matches the Burnside fixture line

289-R-BR8-EP*	End Cap Shelf	24" Wide
289-R-BR8	Standard Shelf	48" Wide

*End Cap (289-R-EP-60) on next page is required to mount this shelf to the shoe/book rack

SHOE & BOOK RACK END PANELS & WALL STANDARDS

REDESIGNED TO MATCH THE BURNSIDE FIXTURE LINE

SHOE/BOOK RACK WOOD END PANEL

Espresso wood melamine end panel | Clips on to the end cap of the shoe/book rack for added style | 60" H x 25-1/4" W | Metal End Cap (289-R-EP-60) is required to mount this to the shoe/book rack

289-R-EPW-60 Espresso



SHOE/BOOK RACK METAL END CAP

Maximize the capacity of the freestanding shoe or book rack with End Caps | Metallic Silver finish matches the Burnside fixture line | 25.18"W X 60"H | Use with 24" End Cap Shelves

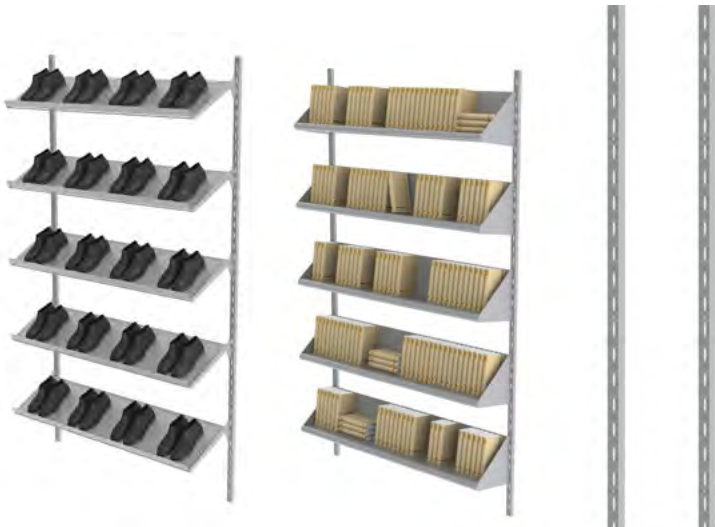
289-R-EP-60 Silver



SHOE/BOOK RACK WALL STANDARD

Create a wall system with Wall Standards and your choice of Book or Shoe Shelves | Wall Standards have wide enough slots to support consecutive runs | 84"H X 0.75"D X 1.18"W | Flush mount to the wall and includes six holes spaced 14" on center | Hardware not included Metallic Silver finish matches the Burnside fixture line | Compatible with other Burnside accessories

289-R-UPRIGHT Wall Standard



MAXIMIZE SPACE WITH THE BURNSIDE GONDOLA WALL TOWER

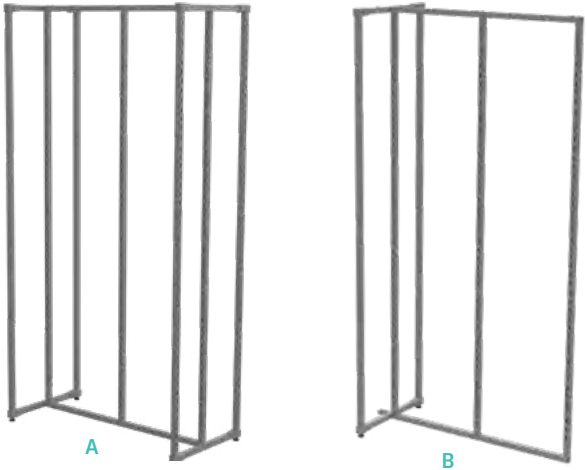
FREESTANDING GONDOLA WALL TOWER

This extra tall (100") double sided wall tower | Begin with the Starter Unit and build out with Add-On units to create rows | Metallic Silver Finish | Units are 53.75" wide and uprights are 24" on center | 100" Tall X 25.75" Deep | Levelers included | Use with Burnside Back Panels and accessories as needed | Use with back panels page 22

A | 292-FSG-8-ST*
B | 292-FSG-8-ADD*

Starter unit
Add-on unit

*Special Order Only



SPECIAL ORDER ONLY

VISIT BURNSIDEDISPLAY.COM

ONE OF THE MOST AFFORDABLE FIXTURE LINES IN ITS CLASS AVAILABLE FOR IMMEDIATE SHIPPING

- » WATCH VIDEO AND EXPLORE BURNSIDE IN-STORE
- » DESIGN YOUR SPACE USING OUR FREE CAD MODELS
- » REQUEST MATERIAL SAMPLES AND MORE INFORMATION



**ELEVATE YOUR
BRAND WITHOUT THE
COST OR WAIT**

**BROUGHT TO YOU
BY GRAND + BENEDICTS**

